



Energy Efficient

## Energy Efficient Solutions

Energy Efficient Solutions from Ceco Door helps keep harsh elements outside with energy efficient foamed in place polyurethane core doors and thermal resistant frames. These products are designed to provide superior insulating capabilities and draft control to help conserve energy costs.

### Applications

Commercial Buildings, Transit Facilities, Mixed Use Development, Corporate Campuses, Schools, Healthcare Facilities, and Government Facilities.

### Available Products

- Energy efficient foamed in place polyurethane core Imperial and Versadoors
- Temperature and draft shielding Weather-Stripped frames
- Frost and condensation build up resistant Thermal Break frames

## HD2-Panel Doors Energy Efficient

High Definition Embossed Design

- Three available designs:
  - 2 Panel
  - Arch Top
  - Plank Arch Top
- Foamed in place polyurethane core provides total surface support, impact resistance and exceptional thermal resistance
- 18 gage galvanized face sheets
- 2868, 2870, 3068, and 3070 sizes
- WH & UL fire ratings up to 3 hours
- ADA compliant designs available



## Trio™ Strong • Beautiful • Green Energy Efficient

The Natural Door Choice

### Strong

- Steel stiffened laminated core for added strength and durability
- 30% less thermal bow than most polyurethane foam core doors

### Beautiful

- No weld marks on the smooth surface so aesthetically pleasing gloss paint can be used
- Many door design options available

### Green

- Injected polyurethane foam option for superior insulation and energy efficiency
- High recycled steel content for LEED points up to 62.75%



## Madera™

The Beauty of Wood with the Durability of Steel

Ceco Madera doors offer the natural beauty of wood in a durable, fire-rated, stainable steel door.

The wood-grain pattern is actually etched in the metal, not painted on. Six attractive natural stain finishes offer a palate of decorating options. The door is finished with a tough, clear top coat with ultraviolet protectors.

It looks and feels like wood. But it won't warp, rot or otherwise wear and weather like wood.

Doors can be fire rated up to 3 hours following typical fire-rated door restrictions based on series, gage and size.



## Sound-Tech Xpress™ Sound

Acoustical Noise Reduction System

Long lead-times and high pricing for acoustical openings are things of the past with the newly expanded Ceco Door Sound-Tech Xpress product line. All products meet ASTM standards ASTM E90, ASTM E1332-90 and ASTM E413.

- Competitively priced STC 32, 38, 41, 41 pairs, 43 and 46 operable openings.
- This STC range covers most education and military requirements for sound doors and LEED for schools.
- All of these products are competitively priced, shipped at standard lead-times and include approved seal systems with certified labels.



## Medallion & Imperial Maxim™

### The student Proof Door and Frame system

Guaranteed to last as long as the school building Itself.

**Medallion Maxim** doors were designed for long lasting performance in educational buildings. Internal steel stiffeners, spaced 6" apart, are welded to the 14 gage door face surfaces every 5" for a maximum-duty Level 4 rating. The door features a lifetime warranty.

**Imperial Maxim** doors contain a foamed in place polyurethane core that provides total surface reinforcement. This gives the well insulated 14 gage seamless door a maximum-duty Level 4 rating. We guarantee the door to last as long as the school building itself.



## ArmorShield™

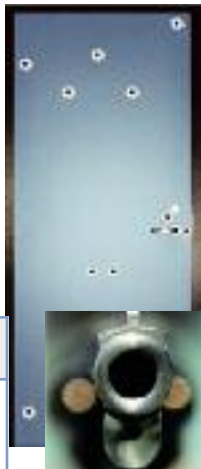
### Bullet Resistant Door System

ArmorShield is effective against a wide range of fire arms when used with structures similarly rated.

Designed for buildings such as utility field buildings, cashier islands, ticket booths, currency exchanges, box offices, court-houses, and casinos.

The internal door construction and concealed armorplate vary and are dependent on the required ballistic rating.

Ballistic Level	Level 1	Level 2	Level 3	Level 4
Weapon	Super 38 Auto	.357 Magnum Revolver	.44 Magnum Revolver	30-06 Rifle



## Windstorm



Hurricane

Doors and frames with impact resistant glass that are also fire rated are now available from Ceco Door. This new opening solution provides end users the flexibility to use glass in fire rated openings that will also comply with the requirements of impact resistance. This is the first product in the industry with 3rd party certification for both impact resistant and fire rated glass.

All Ceco windstorm resistant doors have been 3rd party tested by UL and ITS/WH certified up to 150 PSF to the following test standards:

- ANSI A250.13
- ASTM E330/E1886/E1996
- PA201, PA202, PA203
- TAS201, TAS202, TAS203



Visit the Ceco Door website for more information on Fire Rated Impact Resistant glass and other hurricane products.

## ThruLite™

### Stile and Rail Door Assembly

ThruLite doors have a tubular seamless construction and are Level 3 rated for extra heavy-duty use.

Fully welded 16 gage construction make this door ideal for building entrances, schools, hotels, and theaters.

Available with A-60 galvanized metal. Can be fire rated up to 45 minutes.



## RestrictDor™

### 2" Thick Security Door System

Designed for openings where, detention or security must be addressed such as holding areas in courthouses, stadiums, shopping centers, and casinos.



- 2" thick custom construction with a seamless design rated for Extra Heavy-Duty or Maximum, interior or exterior use
- Extra strong 18 gage stiffeners placed 4" apart and welded to the face sheets every 3-1/2 inches
- 16 - 12 gage face sheets available with 12 gage closer reinforcement and 10 gage inverted steel end channels welded to both face sheets

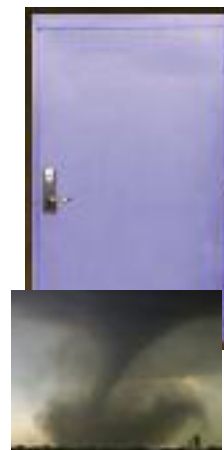
## StormPro™



Tornado

### Severe Weather Door System

StormPro, Ceco Door's tornado resistant door and frame system, is designed to withstand debris from tornado force winds and to help save lives.



The StormPro Severe Weather System meets the rigorous FEMA 361 and 320 guidelines up to 8'0" x 8'0" openings. Heavy duty 14 gage steel door construction with 12 gage internal reinforcements. Frames are constructed with 16 - 14 gage steel with all required anchors.

StormPro 361 and 320 Applications:

- Community Shelters
- Storm Shelters
- Disaster and Tornado Shelters
- School Shelters
- School and Residential 'Safe' Rooms

StormPro is available in single or paired door openings.

**Standard  
Door  
Features**



<b>Door Thickness</b>	1-3/4	1-3/4	1-3/4	1-3/4	1-3/4
<b>Hinge Reinforcement</b>	7 gage steel	7 gage steel	7 gage steel	7 gage steel	7 gage steel
<b>Core</b>	Honeycomb	Polystyrene	Polyurethane	22 gage vertical stiffeners spaced 6" apart, welded every 5", 450° temp. rise	Solid mineral fiber 250 temp. rise
<b>Face Skins</b>	20, 18, 16 gage	20, 18, 16 gage	20, 18, 16, 14 gage	18, 16, 14* gage *Medallion only	20, 18, 16 gage
<b>Edge Design</b>	Mechanically interlocked, hemmed edge	Mechanically interlocked, hemmed edge	Mechanically interlocked, hemmed edge	Custom visible edge seam or seamless design	Custom visible edge seam or seamless design
<b>Nominal Sizes</b>	2068-4090	2068-4090	2068-4090 2panel 2868-3070 6panel 2668-4070 8panel 2868-3070 Crossbuck & Lites 2868-3070	2068-40100	2068-4080
<b>Galv. Options</b>	Yes	Yes	Yes	Yes	Yes
<b>Door Level ANSI/SDI A250.8</b>	Level 1 - 3	Level 1 - 3	Level 1 - 3	Level 2 - 3	Level 1 - 3
<b>Performance</b>	Up to Level A 1,000,000 cycles	Up to Level A 1,000,000 cycles	Up to Level A 1,000,000 cycles	Up to Level A 1,000,000 cycles	Up to Level A 1,000,000 cycles
<b>Fire Label Rating</b>	20 min, 3/4 hr, 1-1/2 hr, 3 hr	20 min, 3/4 hr, 1-1/2 hr, 3 hr	20 min, 3/4 hr, 1-1/2 hr, 3 hr	20 min, 3/4 hr, 1-1/2 hr, 3 hr	20 min, 3/4 hr, 1-1/2 hr, 3 hr

**Sight Light™**  
Light Guide Egress System

**Frames**

Sight Light frames illuminate the frame perimeter for fast identification of exits. These frames are fire-rated up to 3 hours and UL listed. They are available in singles, pairs, or double egress pairs.

**Doors**

Low level exit signs are located 10" from the floor for added security. With Sight Light technology the visibility of the EXIT sign is maximized even in smoky or dark conditions.

Go to [www.liteguide.com](http://www.liteguide.com) for more information.



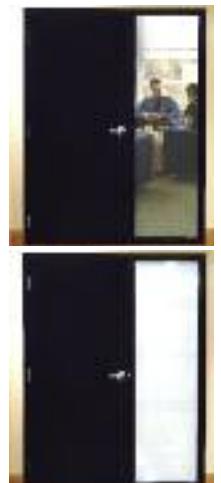
**Privacy SideLite Unit**

Privacy & Security with a flip of a switch.

Innovative "switchable" glass technology changes from clear to opaque with a simple flip of a switch, conveniently providing a more private environment.

It is virtually impossible for potential intruders to see through the sidelite into the room, helping to keep occupants safe.

Optional fail-secure hardware and "switchable" glass can be conveniently operated in unison with one flip of a switch, for quick activation of enhanced security measures.

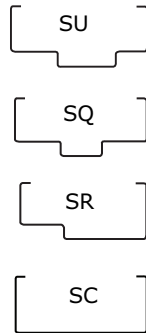


## Standard Frames

For Masonry, Wood, or Metal Stud Wall Applications

Standard frames for masonry, wood, or metal stud walls. Ceco Door frames have precision die-cut corners with positive locking tabs to assure rigid assembly connections. Available in 16, 14, or 12 gage CRS or GALV. steel. Frames can be made in many profiles in either knock-down or set-up & welded. Frames are factory prime painted and can be Colorstyle painted.

- Stocking and make to order depths from 3" to 14"
- Fire Rated up to three hours (UL10B, UL10C and UBC 7-2 )

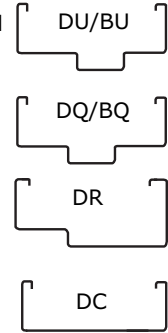


## Drywall Frames

For Before and after Drywall Applications

Ceco Door Drywall Frames are engineered to be installed on standard or non-standard wall sizes over pre-finished or unfinished drywall board. KD frames available in CRS or GALV. 18, 16, or 14 gage steel. Frames are factory primed painted and can be Colorstyle painted.

- Stocking and made to order depths from 3-5/8" to 14"
- Fire Ratings by Underwriters Laboratories (Applied or Embossed), Warnock Hersey (Applied or Embossed), Factory Mutual (Applied Only)



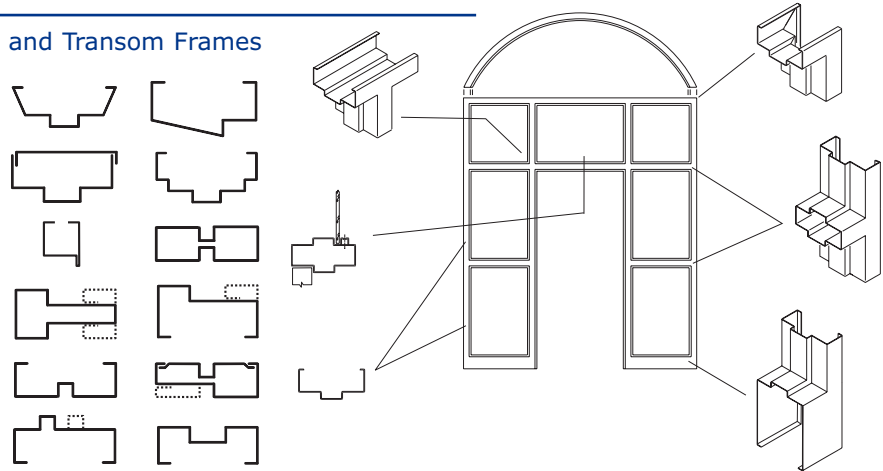
## Custom Frames

Special profile, Sidelites, Borrowed Lites, and Transom Frames

Ceco Door custom frames are available in hundreds of made to order combinations, profiles and backbends to suit your design needs. Ceco Door's manufacturing capabilities go well beyond most hollow metal manufactures abilities.

Available Features:

- 18, 16, 14, or 12 gage steel
- Cold rolled A-60 galvanized or G90 galvanized steel
- Underwriters Laboratories, Warnock Hersey and Factory Mutual fire labels

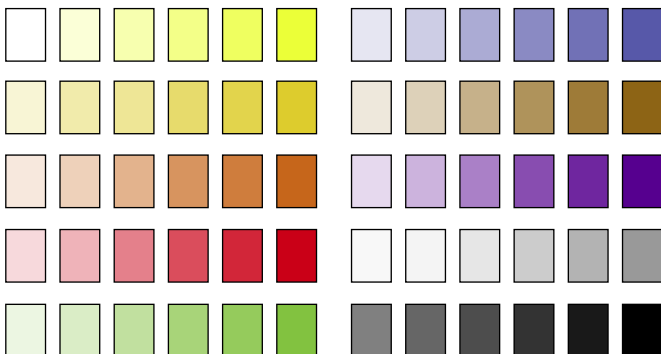


## Colorstyle™

Door and Frame Factory Finishing

Colorstyle doors and frames are factory finished commercial grade, standard or custom, full flush or seamless designs with flat blemish-free faces. Doors and frames are cleaned, phosphatized, primed, and electrostatically painted for a superior color finish.

An array of sample colors are shown below; over 1,900 palette colors available.



## Door Designs

Lites, Louvers, and Embossed Panels

Flush Doors and Doors with Lites



Doors and Louvers



Embossed Panel Doors

